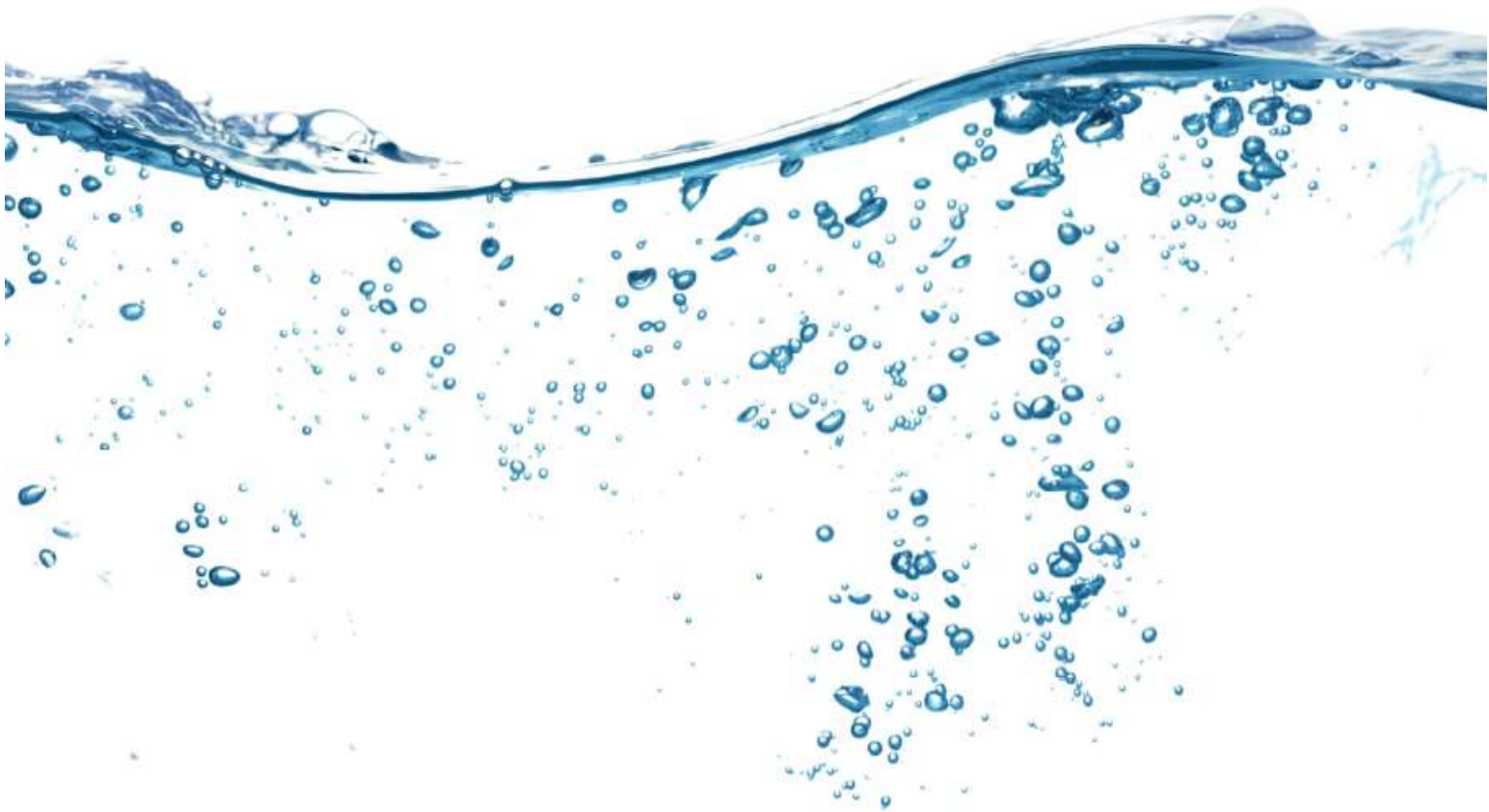
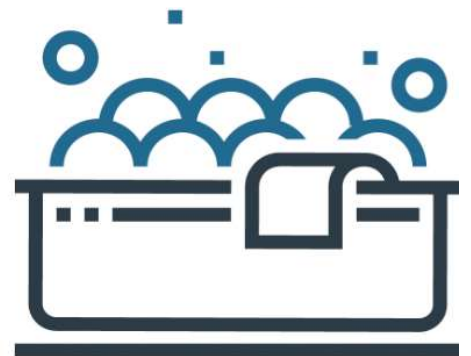


PRE-DELIVERY GUIDE



HOT TUBS
STAFFORDSHIRE



GREAT NEWS ON YOUR NEW SPA PURCHASE.

Thank you for choosing E.J. Payne—Hot Tubs Staffordshire for your new Hot Tub.

This manual will give you all the information you need to prepare for your spa's arrival.

It is very important that you take the time to read this guide in order to make sure everything is ready for your delivery day.

Please feel free to contact E.J. Payne Ltd if you have any questions at all after reading this pre delivery guide. Phone—01782 312534 email: alex@ejpayne.com or paul@ejpayne.com

WHERE TO POSITION YOUR HOT TUB

Choose a location that is:

- **Level ground**
- **Not liable to flooding (Damage caused by flooding is not covered under warranty)**
- **Adequate drainage**
- **Not near overhead cables or powerlines.**

If you have any questions about the positioning of your hot tub please contact us:

Phone—01782 312534

email: alex@ejpayne.com or paul@ejpayne.com

THE PERFECT BASE..

A level base will help your spa run efficiently.

When creating your base remember it must be, flat, firm and very strong. Please take into consideration a weight of 1500kg plus will be placed here for a long period of time.



Concrete base

An ideal base would be concrete, a contracted builder would be able to tell you the thickness required by giving them the filled weights of the spas. However, existing patio slabs and block paving may be used but must be flat, level and on a satisfactory sub base i.e. concrete base.

Please Note: Bases must be prepared in plenty of time prior to delivery, thus allowing time for the concrete, etc to fully cure.

Wherever you decide to position your hot tub, it is fundamental that a solid foundation be provided. Grass will not be suitable. Please note: It is the responsibility of the customer to provide a suitable base that is flat, level and solid to prevent distortion from occurring. Any structural damage caused by improper base or base failure may invalidate manufacturer's warranty.

If you are building a deck around the hot tub, sinking it slightly, or placing it against a wall, ensure easy access is provided to the service panel.

This is almost always on the same side of the hot tub as the touch pad. You must ensure that it is possible to access all sides of the hot tub for maintenance if required. At least 500mm is required on all sides.

Decking as a base

If you plan on having your spa sited on decking please ensure the correct supports are in place to withstand the weight of the spa when it is filled with water.

Please consult a builder for the appropriate parameters in which the decking would need to be built to in order to properly support the spa.

Filled weight plus the spa at capacity can be close to 2000kg so it is important that you consult a builder to check that your decking will support the spa

TIP - Do you have a view to admire from the hot tub? If so; consider how the hot tub can be best rotated so the seating faces the view without obstructing the service panel.

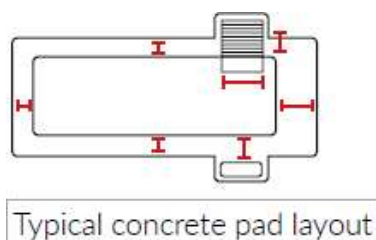
Please note – If you decide to position your spa in the ground/pit or with decking built around it, you will need a design plan to allow access to all side for maintenance and repairs. Access is required to ALL sides of the spa, any obstacle's blocking the access may result in rescheduling. Revisits may be chargeable.

SERVICE ACCESS

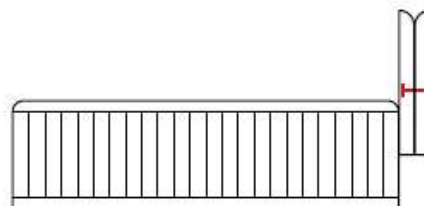
Access is required around the hot tub for any future maintenance and services Ideally 600mm around the spa. If this is not practical then the hot tub may need to be emptied of water prior to any visits from E J Payne. This would need to be done prior to any visits or chargeable to yourself and not E J Payne. Should the spa need to be removed using a crane/HIAB to obtain access, this will be chargeable to yourself.

When deciding on the final location of your hot tub, please take into consideration what accessories you have ordered for your spa. For example ...

- Have you allowed enough space to let your cover fall behind your spa when using your cover lifter? (The average cover lifter requires up to 50cm or 18—20 inches to drop the cover down the back).
- Will other accessories for your spa fit down the side?
- Have you prepared the base to allow room for the steps to sit on? 70cm depth x 90 width is more than enough for any of our steps.



Typical concrete pad layout



ACCESS TO THE DESIRED FINAL HOT TUB POSITION...

Prior to installation, E. J. Payne will conduct a site visit to finalize plans and discuss access to the location of your Hot Tub. This will usually happen between 2 to 4 weeks of your installation date however it is advisable that you have a good idea of access beforehand.

Most hot tubs will be delivered on their side on a spa sledge. You must therefore make sure the access is wide enough for the hot tub and the equipment. Please bear in mind the height of the hot tub will increase slightly when on the equipment by approximately 50mm. A clear route of approximately 100—120 cm width and 230—250 cm height is required as a minimum for the spa to safely be manoeuvred through gates, alley ways and paths.

- Check the widths & heights of doorways, passages and gates to make sure the hot tub can pass through.
- Gates, fences and doors may need to be removed prior to delivery.
- Make sure that there is nothing protruding such as drainage pipes, steps or sills that could obstruct the way.
- Check to see if there are any low roofs or branches that would hinder vertical clearance. If there are any corners on the path to your designated installation site, check to see the hot tub will pass.
- The route to where the hot tub is to be sited should be flat and level and not soft ground.

Under special circumstances, where there is no clear or easy route, a crane can be used to position your hot tub. Please contact a EJ Payne to arrange this service if you think it may be necessary. Please note that the cost of the crane would be charged additionally to yourselves and is not included in our spa prices. If you think you may need a crane please factor this in when pricing your spa.

For specific spa measurements please contact Alex on 01782 312534

Or email alex@ejpayne.com or paul@ejpayne.com

ELECTRICAL SUPPLY INSTALLATIONS, INSPECTIONS AND CONFIRMATION

(Please give a copy to your Electrical Contractor)

Before installing a hot tub, the appropriate electrical supply must be installed, inspected and confirmed as in line with Government regulations. Below is a simple guide to make sure your electrical supply is in line with the appropriate regulations.

Our delivery team will **NOT** hardwire your hot tub in to the mains supply.

Hot tubs must have a suitable electrical supply in order to run, as they have a specific section in the 16th edition IEE (Institute of Electrical Engineers) Regulations. Do not attempt to install the electrics yourself unless you are a fully qualified electrician as the government introduced a law in January 2005 which states that most electrical work in UK households must be carried out by a 'competent person'. This means that Electrical safety requirements have been included in a new Part P of the Building Regulations.

13 AMP Electrical Requirements

Important - Never use an extension cord for your hot tub. The cord provided with your spa is the proper length and gauge for current to travel safely from the electrical outlet to your spa.

32 AMP and 40AMP Electrical Requirements

32 AMP spas don't come with a length of cable. This will need to be provided by yourself. A minimum of a 4 meter tail will be required.

What is Part P?

The law introduced by the Government in 2005 states that anyone carrying out fixed electrical installations in English and Welsh households must ensure they are:

Designed and installed to afford appropriate protection against damage, whether that is mechanical or thermal, so that they do not present any danger

- Suitably inspected and tested in order to verify that they meet the relevant equipment and installation requirements

- If you have a new circuit installed in your home, it is a legal obligation to have it inspected and tested to ensure that it is compliant with Part P. This can be achieved in one of two ways:

1. Appoint an electrical contractor who is registered with a competent person scheme. Visit the websites of the following organisations if you are unsure of who is Part P qualified:

▷ NICEIC – www.niceic.org.uk

▷ NAPIT – www.napit.org.uk

▷ ELECSA – www.elecsa.co.uk

▷ BSI – www.bsi-global.com/kitemark

▷ BRE – www.partp.co.uk

OR

2. Appoint a contractor who is not Part P registered, but contact your local authority's Building Control Department first as the work will have to be inspected and tested by your local authority before it can be confirmed and signed off. There is a charge for this service.

Whichever route you choose to take, you will receive a Part P certificate to confirm that the electrical work is in line with government regulations. From post 2007 this paperwork must be kept on file and presented, even if you sell your house as part of the Home Seller's Packs.

Single zone Spas require 1 connection

Dual Zone Spas require 2 separate connections as each zone is operated by individual controllers. Eg. 15amps to the spa zone + 32amps to the Swim zone. Each zone must be on a separate circuit. It is not legal to split the power cable from 1 circuit to the 2 zones.

We, as your hot tub retailer, can liaise with your electrical contractor regarding the exact specification for your chosen hot tub model. However, you must meet the following specification:

- The hot tub must be hard wired on its own fused spur back to your household consumer unit (i.e. the hot tub should not share a supply with any other appliances.)
- The hot tub should be appropriately protected by a sufficiently rated MCB (mains circuit breaker) and should cover the maximum amperage pull of the hot tub plus 25% to allow for brake torque (i.e. the rush of current when pumps are first turned on.) So, for example, a hot tub that has a maximum current draw of 20 amps should be fitted with a 25amp MCB.
- Your hot tub should be protected against earth faults also, by an RCD (residual current device). This is a trip switch which works to prevent the danger of electric shocks from damaged or waterlogged cables and connections. A suitable rated 30Ma RCD is what is recommended.
- ◊ Any outdoor cabling should be suitably protected from damage by either laying protective ducting (pc pipe) below ground or by using SWA (steel wired armoured) cable. Your electrician will calculate the size of cable required dependent upon loading and the distance from the mains supply.

Emergency/Service Work

An IP65 Rotary Isolator Switch is recommended in order for the hot tub to be isolated outdoors in an emergency or for service work. This is simply a rotary on/off switch, but, should be sited more than 2 meters away from the hot tub so that individuals cannot be in the hot tub whilst touching the switch.

Weatherproof

A suitable weather proof block connector should be fitted to the end of the tail from the isolator in order for the hot tub to then be directly hard wired into the weatherproof block connector inside the hot tub. Waterproof gland packs should be used to prevent ingress of water on all electrical connections (2 at the isolation switch). It must be ensured that all earth cables are clearly colour coded with green/yellow insulating tape, or an earth sleeve.

Final Stage

Finally, once the hot tub is filled and the electrical supply is installed, our installation team will commission the Hot Tub and check everything is fully operational before the hot tub is 'handed over' to you with the appropriate chemicals and any extras that have been supplied.

If you are in any doubt at all about the required electrical guidelines you should seek professional advice from a fully qualified electrician.

Electrical Supply Checklist—32 AMP

- ☐ 32AMP supply has its own specific port on the mains board
- ☐ 32 AMP supply isolation switch has been positioned 2 meters away from where spa needs to be positioned
- ☐ 32 AMP supply cable has been placed from isolation switch and ready to wire into the spa

Please note: Your electrician should leave enough spare cable attached to the isolator to go to the farthest side of the Hot Tub.

(A minimum recommended 4 metre tail with block connector is required from the isolation switch).

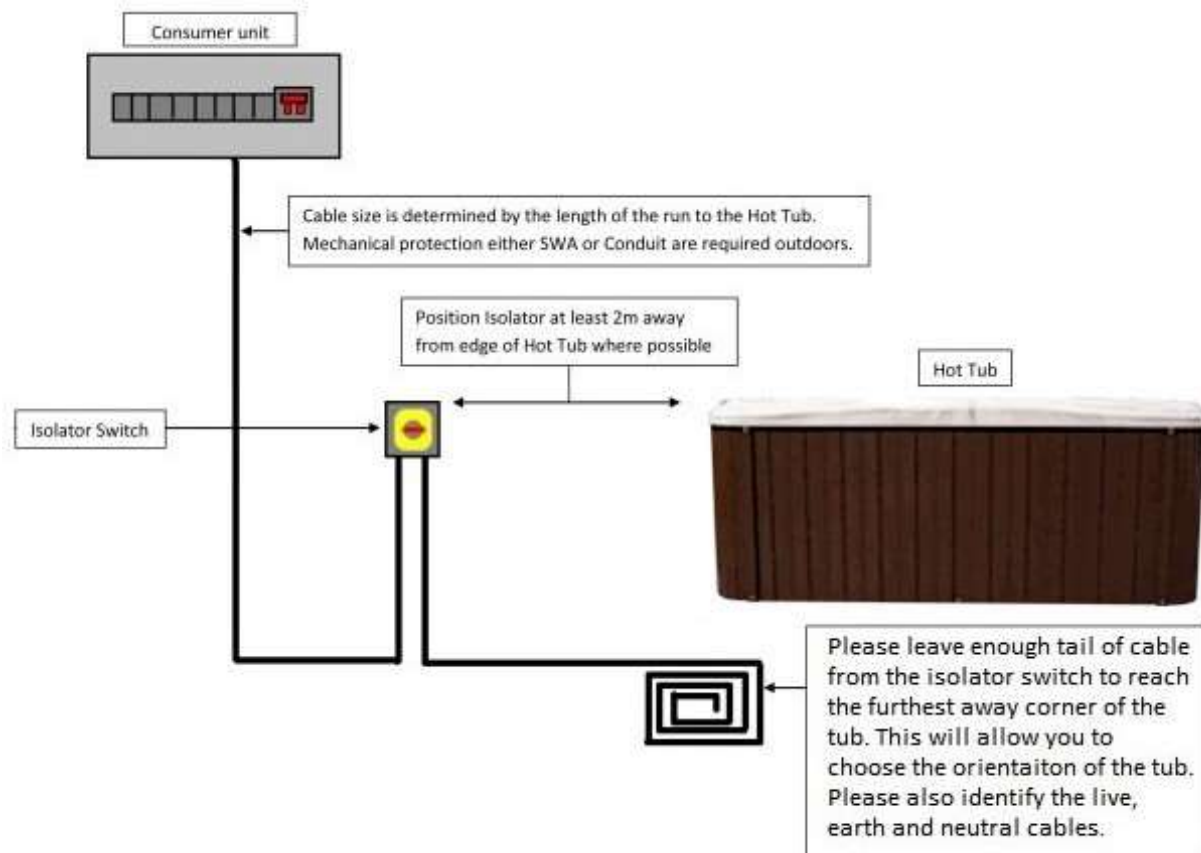
Part P Certificate has been supplied by electrician

Electrical Supply Checklist—13 AMP

- ☐ 13Amp outdoor socket has been located 2 meters away from the spa
- ☐ 32AMP supply has its own specific consumer unit
- ☐ 32 AMP supply isolation switch has been positioned 2 meters away from where spa needs to be positioned
- ☐ 32 AMP supply cable has been placed from isolation switch and ready to wire into the spa
- ☐ Part P Certificate has been supplied by electrician

IT IS YOUR RESPONSIBILITY TO ENSURE THE CORRECT ELECTRICAL SUPPLY IS FITTED AND WORKING PRIOR TO YOUR DELIVERY DATE.

32AMP ELECTRICAL SUPPLY EXAMPLE



Thank you for taking the time to read our pre-delivery guide. Everything in this guide will help make the delivery as smooth as possible and also get you up & running and enjoying your spa as safely and efficiently as possible.

Finally, on the day...

- Please ensure that Children and pets are safely out of the way.
- Please remove cars from the driveway to keep access clear
- Please ensure the area is tidy and free from plant pots, toys, etc.

NAME:

SPA:

AMPS:

E J Payne Ltd—Hot Tubs Staffordshire

1-3 Belgrave Road, Longton, Stoke-On-Trent, ST3 4PR

t: 01782 312534

E: alex@ejpayne.com

www.ejpayne.com



**Follow us on facebook; Hot Tubs
Staffordshire—E.J.Payne Leisure**